

# BA-88A

## Semi-Auto Chemistry Analyzer

- Endpoint , Fixed-time , Kinetics and Absorbance
- Wavelengths range 340 to 670nm
- 7.0" TFT touch screen & popup keypad
- External keyboard and mouse support via USB
- Up to 200 tests can be programmed
- Testing modes: flowcell and cuvette
- User-friendly interface
- Power-failure protection
- Universal power supply



**mindray**  
healthcare within reach

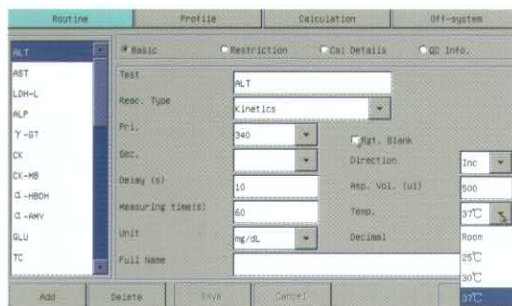
# BA-88A

## Semi-Auto Chemistry Analyzer

Straightforward software interface, easy to get started!

Large LCD touch-screen, clear and user-friendly

Two USB ports (2.0), for keyboard, mouse, printer



- Simple parameters setup
- Quick interchange between 4 temperature options
- Support Bi-Chromatic tests



- Multi-functional and comprehensive testing panel interface display
- Real-time monitor of reaction curve/data and temperature change
- Parameters can be reviewed in test panel



Patient: Tom  
 Sample ID: 1001  
 Age: 20 year  
 Gender: Male  
 Tube: Serum  
 Room:   
 Add Edit Delete  
 Sender: Emergency Room  
 Test Date: 2008-07-17  
 Tester: Lab 1  
 Reviewed By: Dr. Lee  
 Save Cancel Print Return

Routine Profile Calculation Off-system  
 HCT  
 LDM-L  
 ALP  
 T-ST  
 CK  
 CK-MB  
 G-HDH  
 G-BMY  
 GLU  
 TC  
 K factor: 1745.000  
 Replicate  
 F101 F102 F103 F104  
 Add Delete Save Cancel Return

- Customizable patient information
- Capable of adding off-system test results

- Support K-factor programming

Support two testing modes: Flowcell or Cuvette; easy to shift between modes

Easy maintenance: remove black cover to change lamp



# BA-88A

## Semi-Auto Chemistry Analyzer

### Technical Specifications:

#### Principles

ALT, AST, ALP, ACP, GGT,  $\alpha$ -HBDH, LDH, CK, AMY, TG, TC, HDL-C, UA, UREA, Cr, Glu, TP, Alb, T-bil, D-Bil, TBA,  $\text{NH}_4^+$ ,  $\text{HCO}_3^-$ , Ca, Mg, Cl, Na, K, apoA1, apoB, Lp(a), C3, C4, IgG, IgA, IgM, HbA1c, Alcohol, Amphetamines, Barbiturates, Benzodiazepine etc.

#### Analysis Method

Endpoint, with or without reagent blank  
Endpoint, with sample blank and reagent blank  
Kinetics, with or without reagent blank  
Two-point Kinetics/Fixed-time, with or without reagent blank  
Absorbance  
Turbidimetry  
Linear and non-linear calibration

#### Light Source

Tungsten-halogen lamp 6V/10W

#### Wavelength Range

Automatic by 8-position filter wheel  
8 standard filters: 340nm, 405nm, 450nm, 510nm, 546nm, 578nm, 630nm and 670nm. Bandwidth < 8nm  
Stray light: < 0.1% @ 340nm

#### Photometric Range

0~3.5 ABS  
Stability: < 0.005A / 20min @ 340nm

#### Flowcell

Stainless steel with quartz window  
Measuring volume: 32  $\mu\text{L}$   
Optical path: 10mm  
Aspiration volume programmable: 200~9000  $\mu\text{L}$

#### Input

Touch screen with touch pen and popup keypad  
Mouse or Keyboard via USB

#### Temperature Control

By means of Peltier elements  
Room temperature, 25°C, 30°C and 37°C

#### Storage

More than 3000 sample results  
More than 1000 QC results

#### Printer

Built-in thermal printer  
Support HP series

#### Interface

RS232 serial port supporting data transmission  
USB port (2.0) for keyboard, mouse, printer

#### Operating Environment

Temperature: 15°C~30°C  
Humidity: 35%~85%, no condensation

#### Power Requirement

Wide power supply: AC 100-240V, 50 / 60Hz

#### Dimension

430mm x 360mm x 170mm (L x W x H)

#### Weight

6.8 Kg

DISTRIBUTOR:



MINDRAY is a trademark of Shenzhen Mindray Bio-Medical Electronics Co., Ltd. Specifications subject to changes without prior notice.  
© 2010 Shenzhen Mindray Bio-Medical Electronics Co., Ltd. All rights reserved.  
P/N: ENG-BA88A-210285x4-20100203

**mindray**

Mindray is listed on the NYSE under the symbol "MR"  
Mindray Building, Keji 12th Road South, High-tech Industrial Park,  
Nanshan, Shenzhen 518057, P.R. China  
Tel: +86 755 26582888 Fax: +86 755 26582680  
E-mail: intl-market@mindray.com Website: www.mindray.com