

# MINDRAY

## BC-5380

Auto Hematology Analyzer



# BC-5380

## Auto Hematology Analyzer

With autoloader and closed tube sampling functions, BC-5380 can bring you safety and convenience.

Its design, powerful software, user friendly operation, high performance, cost efficiency and dynamic report format ensure end user satisfaction.

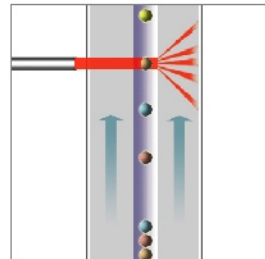
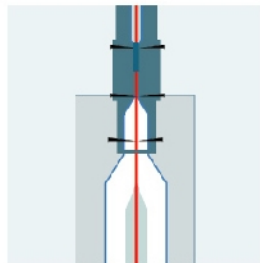
Impedance method, Advanced Flow Cytometry, Laser Scatter light, Chemical Dye method; all these mainstream technologies are combined together in one package to assure accuracy and consistency of test results.

- 5-part differentiation, 27 parameters,  
1 scattergram and 3 histograms
- Semi-conductor Laser Scatter combined  
with Chemical Dye method, Advanced  
Flow Cytometry
- Only 20ul sampling volume
- Up to 60 samples per hour
- 2 sampling modes: Autoloader  
and Closed Tube
- 2 counting modes: Whole blood and  
Prediluted
- Capability to flag abnormal samples
- Large storage capacity: up to 40,000  
samples



## Laser light scatter and chemical dye method

BC-5380 utilizes reliable and economical semi-conductor as light source for flow cytometry system with unique chemical dye reagents treatment. Through analysis of different angle scatters, cell size, granularity and complexity, WBC 5-part differentiation can be accurately achieved.



## Dual Acceleration Flow cell system

Dual acceleration flow cell system ensures more stable and single cell flow, which allow for accurate measurement via laser scatter.

### Safe and Efficient

Autoloader with 30 samples capacity and random access to enhance walk away automation

No need to un-cap sample tubes, Closed tube mode can safeguard from operational hazards

Up to 60 tests per hour with autoloader

Up to 50 tests per hour with Closed tube



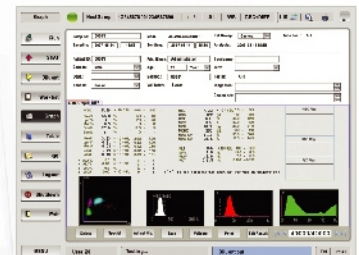
### Flexible and Convenient

Customizable, versatile and powerful operation software

Troubleshooting with just one press of a button

No daily maintenance

STAT samples can be inserted randomly



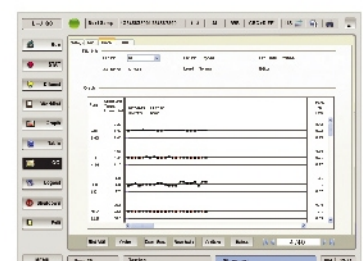
### Cost-effective and Accurate

Only 4 reagents for routine sampling including Diluent, LEO I

Lyse, LEO II Lyse and LH Lyse

Combination of advanced technologies enhancing accuracy

Comprehensive quality assurance



# BC-5380

## Auto Hematology Analyzer

### Technical Specifications:

#### Principles

Impedance method for WBC, RBC, PLT counting

Cyanide-free reagent for Hemoglobin test

Flow Cytometry (FCM), Semi-conductor Laser scatter, chemical dye method, independent Basophil channel

#### Parameters

WBC, Lym%, Mon%, Neu%, Eos%, Bas%, Lym#, Mon#, Neu#, Eos#, Bas#,  
RBC, HGB, HCT, MCV, MCH, MCHC, RDW-CV, RDW-SD, PLT, MPV, PDW, PCT,  
LIC%, LIC#, ALY%, ALY#  
3 histograms and 1 scatter gram

#### Sampling Mode

Autoloader

Closed Tube

#### Throughput

Up to 60 samples per hour with autoloader

Up to 50 samples per hour with closed tube

#### Sample Volume

Whole Blood: 20 $\mu$ l

Prediluted: 20 $\mu$ l

#### Test Mode

CBC CBC+DIFF

#### Performance

	Carryover	Precision	Linearity
WBC	$\leq 0.5\%$	$\leq 2.0\% (4-15 \times 10^9/L)$	$0.00-99.99 \times 10^9/L$
RBC	$\leq 0.5\%$	$\leq 1.5\% (3.5-6.0 \times 10^{12}/L)$	$0.00-8.00 \times 10^{12}/L$
HGB	$\leq 0.6\%$	$\leq 1.5\% (110-180g/L)$	0-250g/L
PLT	$\leq 1.0\%$	$\leq 4.0\% (150-500 \times 10^9/L)$	$0-1000 \times 10^9/L$



#### Data Storage Capacity

Up to 40,000 results including numeric and graphical information

#### Communication

LAN Port supports HL7 protocol

#### Operating Environment

Temperature: 15  $^{\circ}$ C -30  $^{\circ}$ C

Humidity: 30-85%

Air Pressure: 70-106 kPa

#### Power Requirement

A.C.100-240V  $\leq$  300VA 50/60Hz



**MINDRAY™**

Mindray Building, Keji 12th Road South, High-tech Industrial Park,  
Nanshan, Shenzhen 518057, P. R. China

Tel: +86 755 26582492, 26582888 Fax: +86 755 26582680

E-mail: [intl-market@mindray.com](mailto:intl-market@mindray.com) Website: [www.mindray.com](http://www.mindray.com)



**DISTRIBUTOR:**